

Sree Shiva Sai Cast Pvt. Ltd.

Reliable & Cost-effective Castings
Delivered in Time. **Everytime.**





Y - Type Strainer

Sree Shiva Sai Cast Pvt. Ltd.

Sree Shiva Sai Cast Pvt Ltd (SSSCPL) offers a total needs approach that encompasses the entire stainless steel casting spectrum up to 500 kg. SSSCPL offers quick response on commercial, quality, non-destructive tested and upgraded quality, rough or finished machined castings.

SSSCPL currently serves major industries such as petrochemical, food processing, pulp and paper. Our customers depend on us to provide them with state-of-art industry expertise, advice and service.

At SSSCPL, we invest our time & resources to know your business. By having a clearer understanding of your business requirements, we're able to integrate more effectively with you and become an integral part and a competitive advantage to your supply chain.

Before a mould is even made or a casting is formed, SSSCPL technicians render the design using SoftCAST.

This advanced, 3-dimensional technology allows you to “see” the casting before it's made, it provides a solidification and heat flow simulation. This ability to develop “virtual castings” is a superior method of reducing costs, maximizing production values, and providing peace of mind. SSSCPL customers have realized both the financial and qualitative benefits of this unique pre-production tool.

To ensure that your needs and expectations are surpassed every-time, our team of skilled technologists, engineers and metallurgists work hand-in-hand with you every step of the way.

We continuously strive to provide superior quality solutions in a fast, efficient, and cost-effective manner. We understand and appreciate the fact that in your success is our success.

Established in the year 1994

Work with **over 40 grades** of plain carbon steel to high alloy steel, stainless steel to super duplex stainless steel and Nickel based alloys

ISO 9001:2008 Certified
PED 97/23/EC Certified
AD 2000-Merblatt W0 Approved
IBR Well Known

Castings for Valve Industry

At Sree Shiva Sai Cast Pvt. Ltd. (SSSCPL), we take great pride in being able to supply a large range of Castings for Valve Industry according to ASTM, EN and other International Standards. With a variety of shapes, sizes & weights, SSSCPL has a solution to meet your specific casting needs. The castings can be supplied as rough, semi machined, fully machined and/or hydrotested as per your requirement.

The other valve castings manufactured at SSSCPL include the following:

- Plug Valve
- Safety Valve
- Control Valve
- Rotary Valve
- Triple Offset Butterfly Valve
- Double Flanged Butterfly Valve

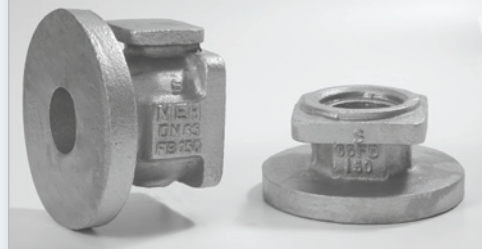
Globe Valve
(Size: 50 mm - 600 mm | #150 - 2500 | PN16 - PN40)



Piston Valve
(Size: 40 mm - 350 mm | #150 - 300 | PN40)



Ball Valve
(Size: 50 mm - 300 mm | #150 - 1500 | PN16 - PN40)



Sree Shiva Sai Cast Pvt. Ltd.
ISO 9001:2008 Certified Manufacturers & Suppliers
of Steel, Stainless Steel and Nickel Alloy Castings
www.ssscpl.com



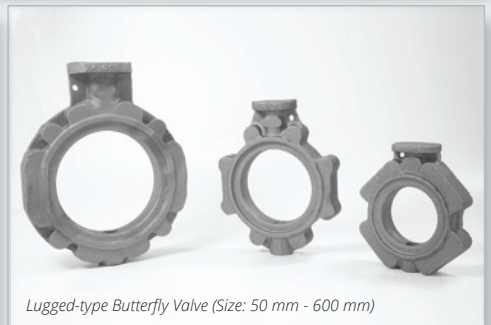
Knife Gate Valve (Sizes: 50 mm-800 mm)



Bonnets



Wafer-type Butterfly Valve (Size: 50 mm - 600 mm)



Lugged-type Butterfly Valve (Size: 50 mm - 600 mm)

Castings for Valve Industry



Piston Valve
(Size: 40 mm - 350 mm | #150 - 300 | PN 40)



Piston Valve



Piston Valve



Globe Valve

(Size: 15 mm - 350 mm | #150 - 2500 | PN 16 - PN 40)



Check Valve

(Size: 15 mm - 300 mm | #150 - 900)



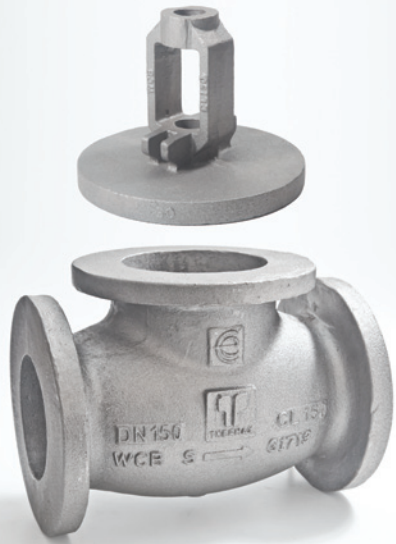
Gate Valve

(Size: 25 mm - 350 mm | #150 - 1500)



Bello Seal Valve

(Size: 50 mm - 350 mm | #150 - 300)



Castings for Pump Industry

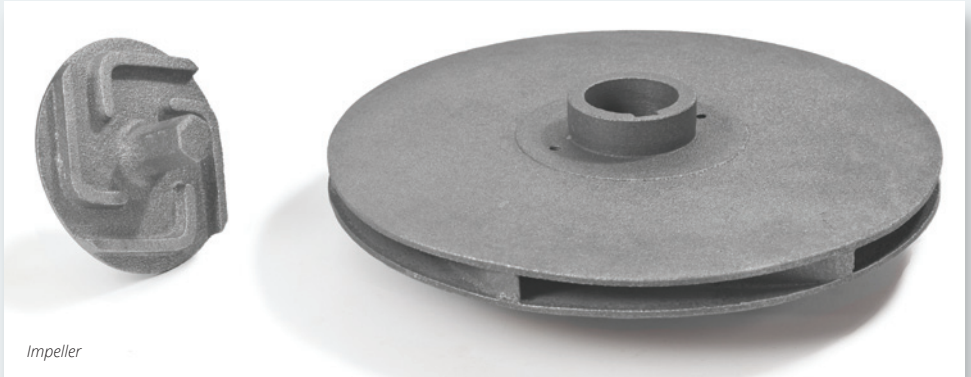
Our castings also have been used in nuclear applications, oil & gas, pharmaceutical industry, etc. The casings manufactured are from a single suction - single delivery to double suction - double delivery.

We have manufactured impellers of open & closed type with min OD of 100 mm - 900 mm and opening of closed type from 6 mm to 150 mm.

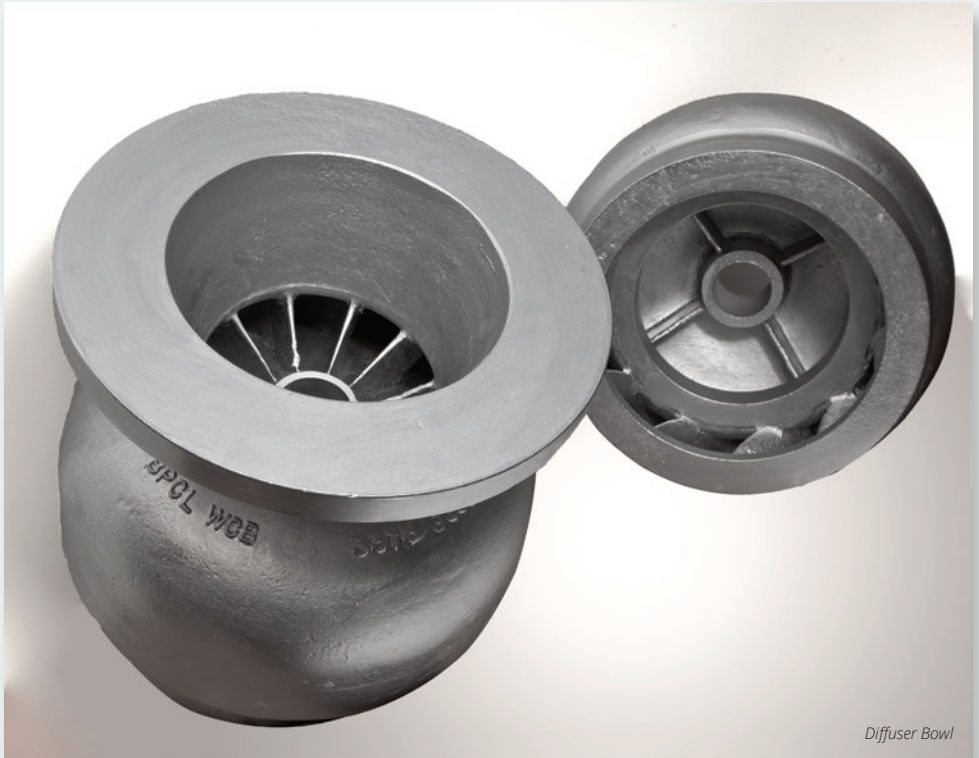


Pump Casing

Sree Shiva Sai Cast Pvt. Ltd.
ISO 9001:2008 Certified Manufacturers & Suppliers
of Steel, Stainless Steel and Nickel Alloy Castings
www.ssscpl.com



Impeller



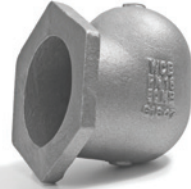
Diffuser Bowl

Castings for Steam Application

Steam Trap
(Size: 15 mm - 100 mm | #150 - 300 | Flange/ Butt weld)



Steam Trap



Inverted Bucket Steam Trap
(Size: 15 mm - 50 mm | #150 - 300)



Direct Acting Pilot Operated Reducing Valve
(Size: 15 mm - 80 mm | #150 - 300)



Steam Trap





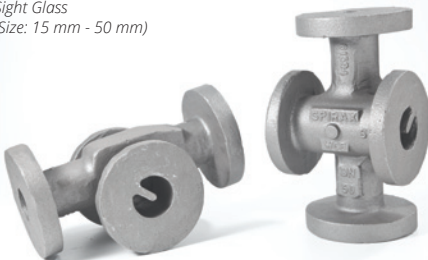
SSSCPL has been supplying these castings for Steam Application for major players in Boiler manufacturing in India. There are very few companies in India that can

manufacture these critical castings. We have been the sole suppliers to our customers for these products.

Moisture Separator
(Size: 25 mm - 300 mm | #150 - 600)



Sight Glass
(Size: 15 mm - 50 mm)



Sight Glass



Strainer

Bucket Type Strainer (Mono Quick Release)
(Size: 80 mm - 350 mm | #150 - 300)



Y Type Strainer

(Size: 40 mm - 350 mm | #150 - 2500)

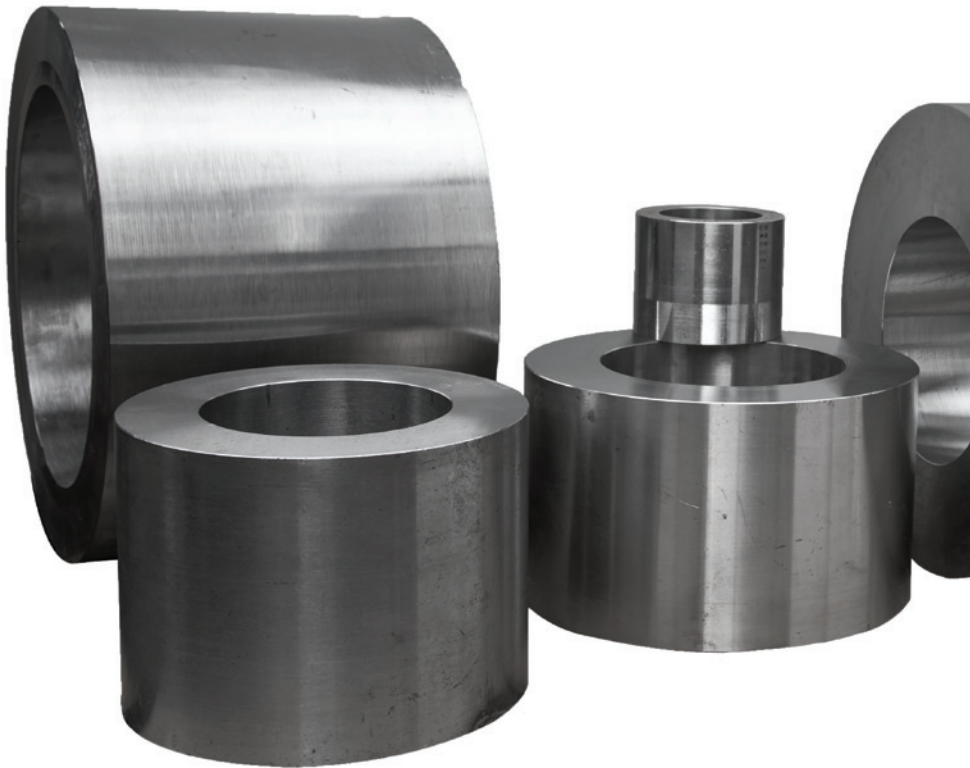


Bucket type strainer is one of the highly critical castings to manufacture. Our customer requirement and stringency regarding the wall thickness is in the tolerance of 1 mm only. The biggest bucket

type strainer that was developed by SSSCPL had a body length of 6 ft.

The Y type strainer of class 200 mm was supplied in CF3M and 4A grade. It was radiographed with acceptance level 1.

Centrifugal Castings

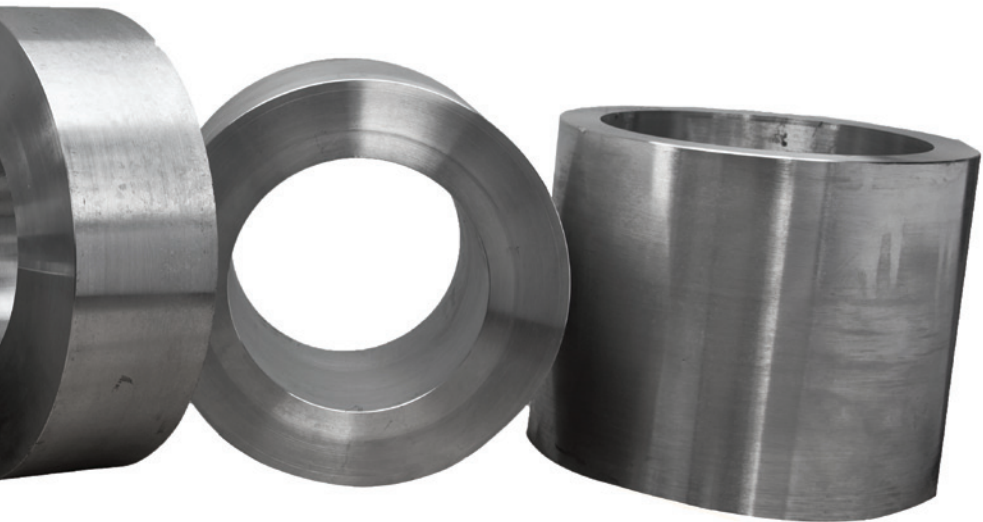


Centrifugal castings were supplied for metallic gasket purpose. We also cater to valve manufacturers who use these castings for the purpose of seating. Control Valve manufacturers use these castings exclusively for seat retainer.

Weight range: 60 kg - 500 kg

Minimum Size: ID 180 mm with minimum thickness of 20 mm

Maximum Size: ID 400 mm with minimum thickness of 50 mm



Castings for Other Industry

We also cater to agricultural industry for applications like rice polishing, sorting, cultivation etc.

We are a regular supplier to Earth Moving Equipment and Defence Equipment manufacturers such as BEML, Keltron etc.





Some of the Grades Manufactured...

American Society of Testing Materials (ASTM)

A890 Gr 2A
A890 Gr 6A
A487 Gr 4
A352 Gr LCA
A352 Gr CA6NM
A352 Gr LCC
A352 Gr LCB

A351 Gr CF8M
A351 Gr CF8
A743 Gr CA40
A743 Gr CA15
A216 Gr WCC
A148 Gr 60
A216 Gr WCB
A-128 Gr B-1
A-128 Gr B-2
A217 Gr WC6
A217 Gr WC9
A217 Gr C12
A494Gr M35-1
A494Gr M25-S
A351 Gr CF3M
A351 Gr CF3
A747 Gr CB7Cu-1
A747 Gr CB7Cu-2
A494 Gr-CZ 100
ASTM A 128 Gr 4
A351 Gr CF8C
A351 Gr CF20
A351 Gr CD4M Cu

A351 Gr CN7M
A494GrN-12Mv HAST A-B
A494GrCW 12-MW HAST A-C

Indian Standards (IS)

IS 1030 Gr II
IS 2707 Gr II
IS 1030 Gr I
IS 2708 Gr II
IS 1030 Gr 1103-99

PED Certified for the following grades:

1.0619
1.6220
1.7379
1.4408
1.0625
1.4409

Others

Alloy Steel (Adopter)
Alloy Steel (Tooth Point)

BS 3100 Gr-A2
Inconel-718
Stainless Alloy 800

EN8
PC 1006
Monnel

...and many more!

SSSCPL Advantage+

Why Sree Shiva Sai Cast Pvt. Ltd.?

- We can deliver highest quality of castings in wide range of steel, stainless steel and nickel based alloys to global customers in timely manner and at affordable prices.
- We have the required manpower, technologies, skills and experience of supplying quality castings to customers in India as well as abroad.
- We are passionate and committed to our work and by God's grace have excellent team that supports us in our endeavor.
- We consciously deliver MORE use value than the CASH value we seek.

Why Shivamogga?

- Shivamogga lies on the banks of the Tunga River and is popularly called "The Gateway of Malnad—the hilly region of the Western Ghats." The tropical wet and dry climate with average annual temperature being 26°C makes Shivamogga an ideal place to have a foundry and castings industry.
- Shivamogga has an excellent connectivity by road and rail to and from Bangalore and Mysore.
- Shivamogga Airport is coming up at Sogane—6 km from Shivamogga.
- Shivamogga has an average literacy rate of 88.02% and has excellent availability of skilled manpower for this industry.



Partial List of Customers

- Audco India Ltd, Kanchipuram
- Axles India, Chennai
- Bharat Pumps And Compressors Ltd, Allahabad
- Bharath Earth Movers Limited, Bangalore / KGF / Mysore
- Coperion Ideal Pvt Ltd, Noida
- Expert Engineering Enterprises, Belgaum
- Flowserve India Controls Ltd, Chennai and Bangalore
- Forbes Marshall Arca, Pune
- Forbes Marshall Ltd, Pune
- Kennametal India Ltd, Bangalore
- KSB Pumps Limited, Coimbatore
- L & T Valves Ltd, Coimbatore
- Micon Engineers (Hubli) Pvt Ltd, Hubli
- MIL Controls Ltd, Thrissur
- Milltech Machineries Pvt Ltd, Bangalore
- New Field Engineers, Bangalore
- Premier Ltd, Pune
- Samson Controls Pvt Ltd, Pune.
- Shalimar Valves Pvt Ltd, Hubli & Mumbai
- Spirax
- TMS India Pvt Ltd, Bangalore
- Toshnival Hyvac Pvt Ltd, Chennai
- Uniklinger Ltd, Pune

Sree Shiva Sai Cast Pvt. Ltd.

Survey No. 57, Gejjenahalli

Shivamogga – 577204

Karnataka, India

Phone: +91 8182 659691/93/94

www.ssscpl.com



Sree Shiva Sai Cast Pvt. Ltd.

ISO 9001:2008 Certified Manufacturers & Suppliers
of Steel, Stainless Steel and Nickel Alloy Castings